

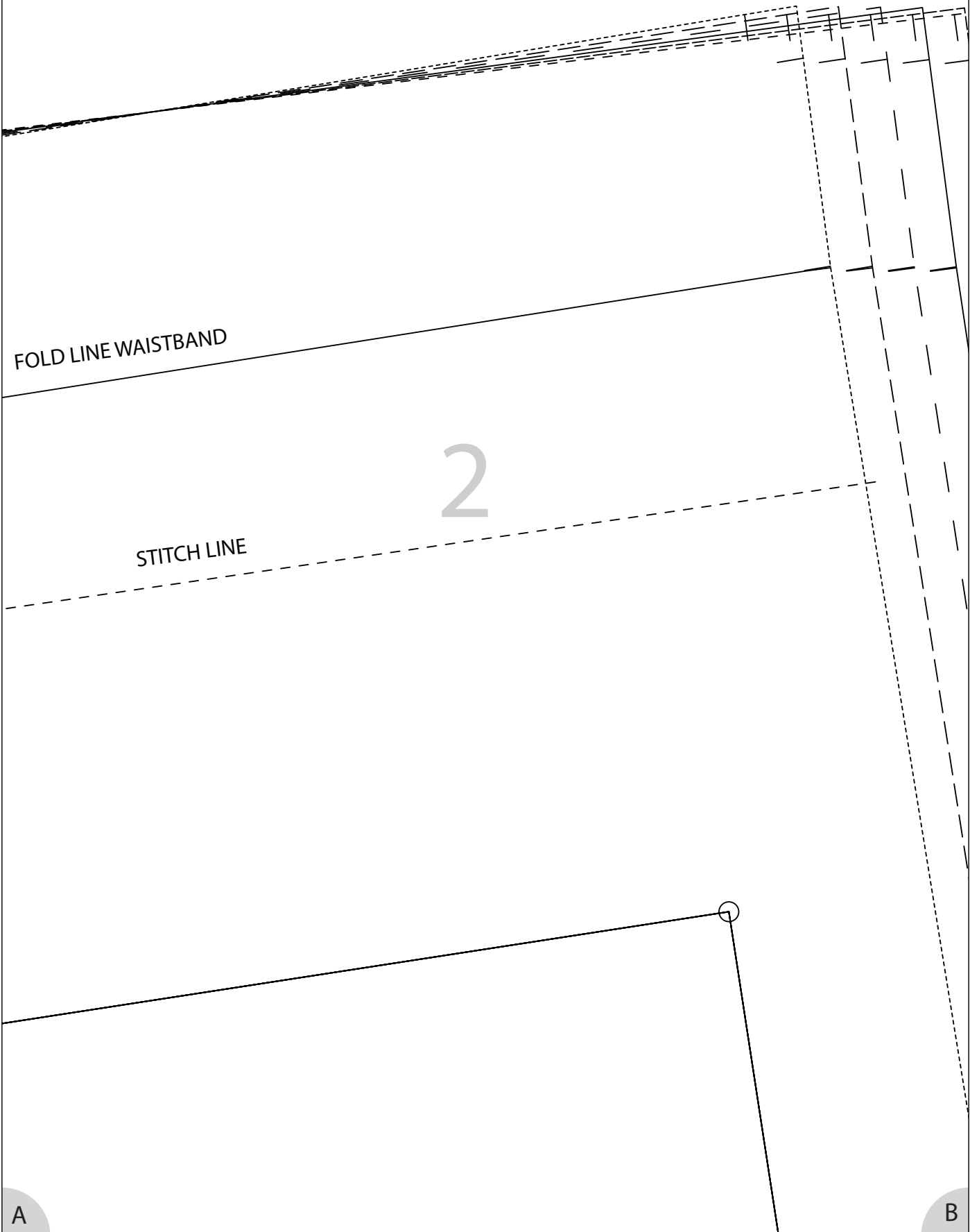
FOLD LINE WAISTBAND

2

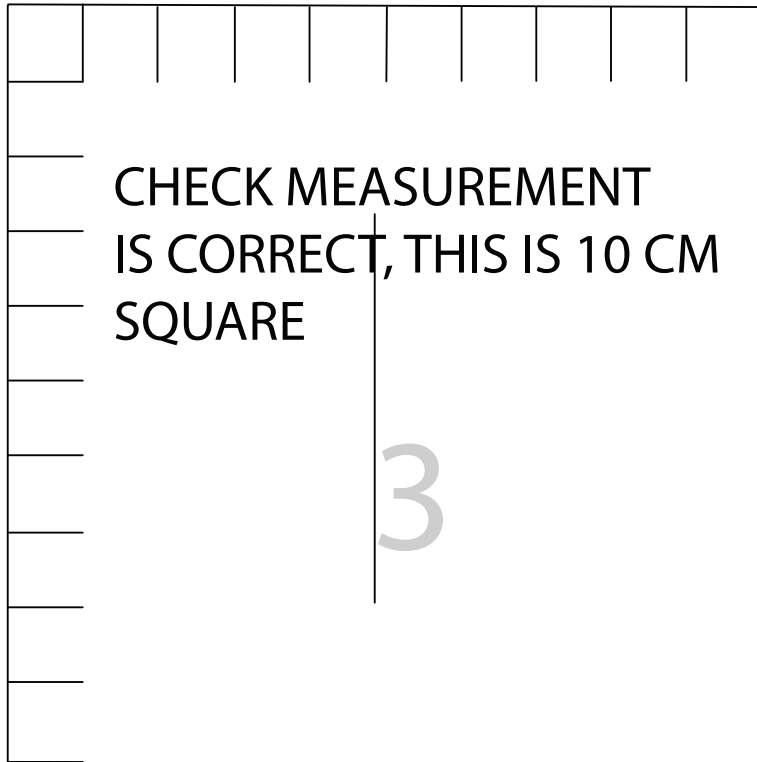
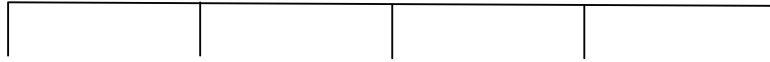
STITCH LINE

A

B



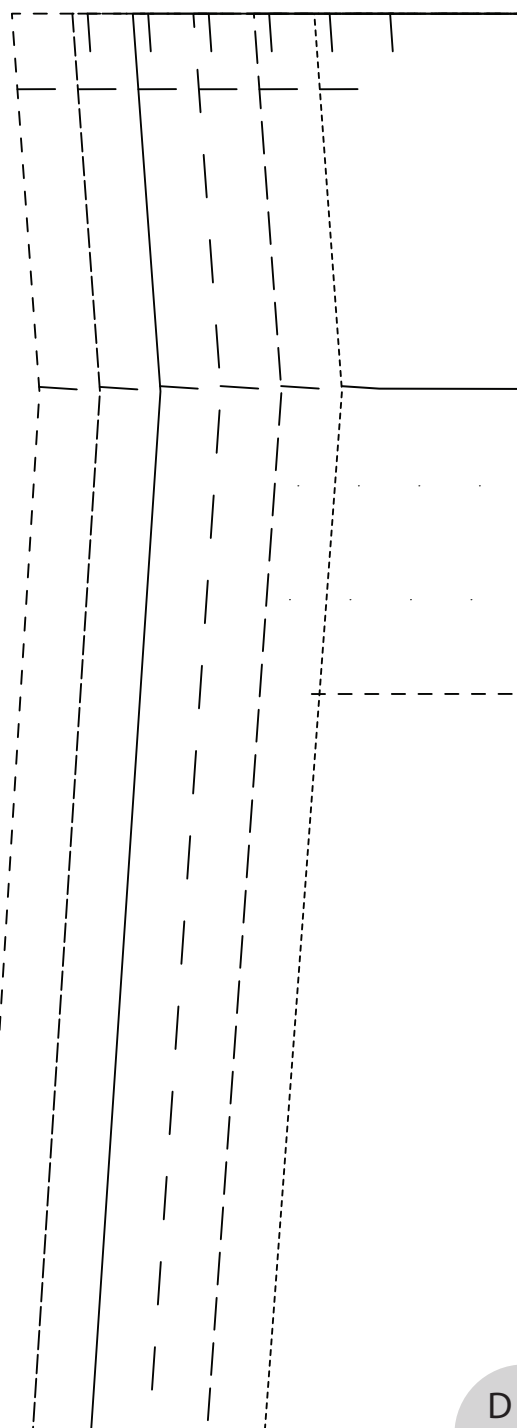
4 INCHES



CHECK MEASUREMENT
IS CORRECT, THIS IS 10 CM
SQUARE

3

4



C

D

5
FOLD LINE WAISTBAND

STITCH LINE

D

E

6

A

7

F

A

B

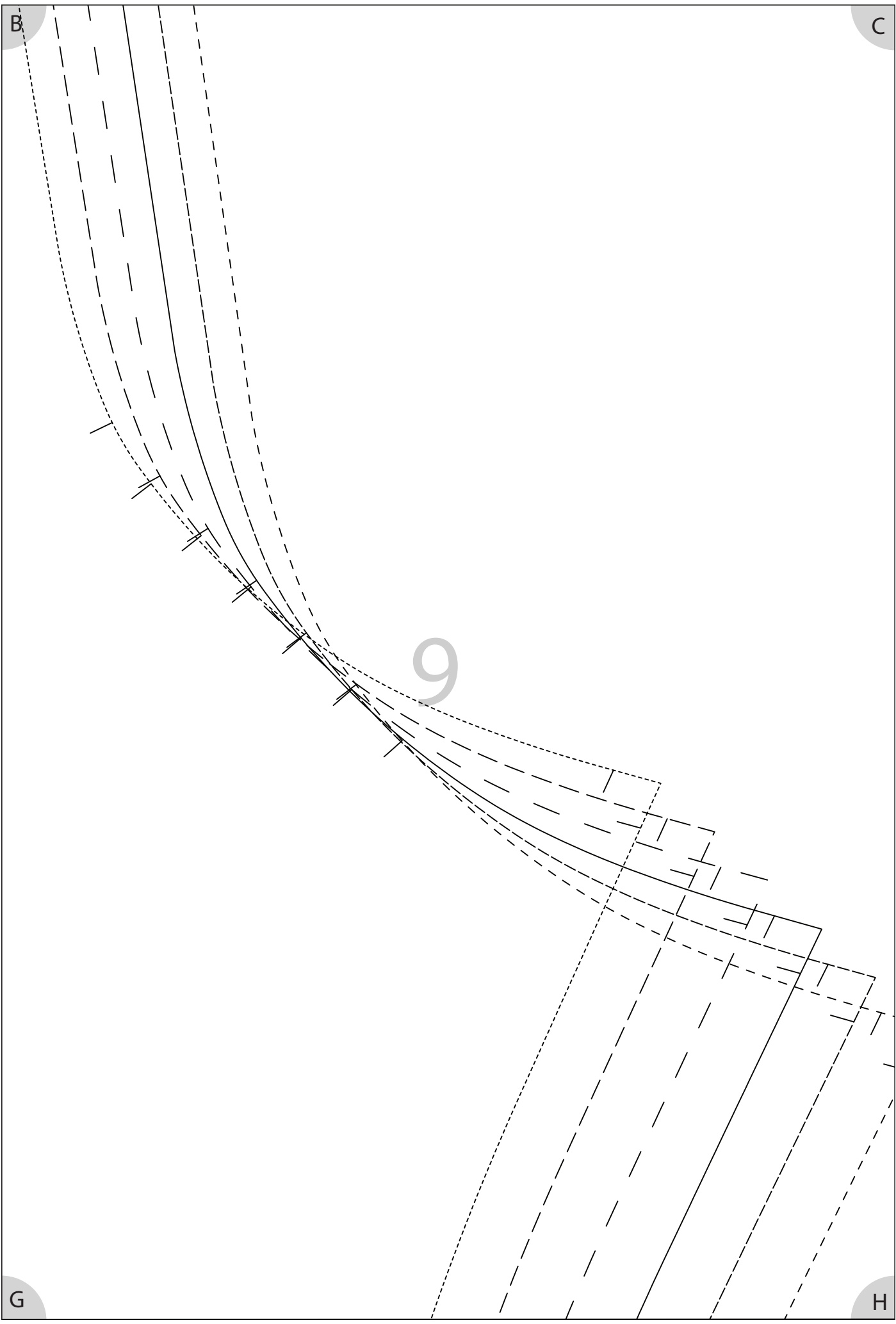
8

S
XS
M

L
XL
XXL

F

G



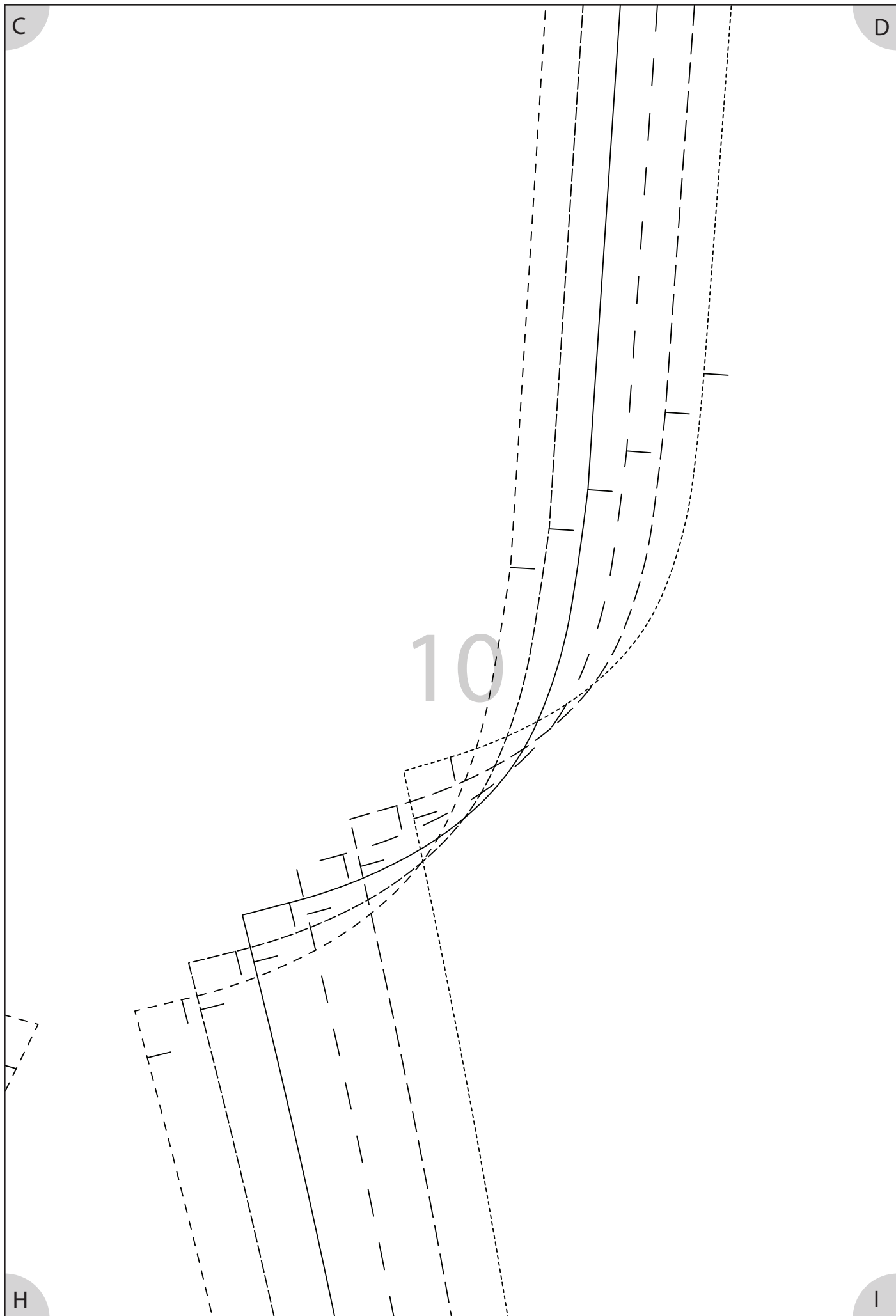
C

D

10

H

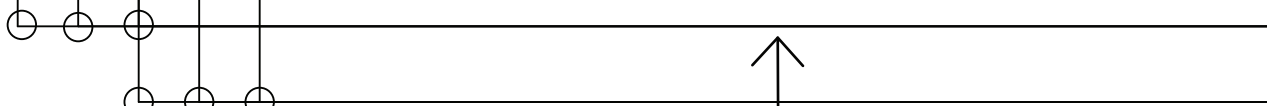
I



D

E

11

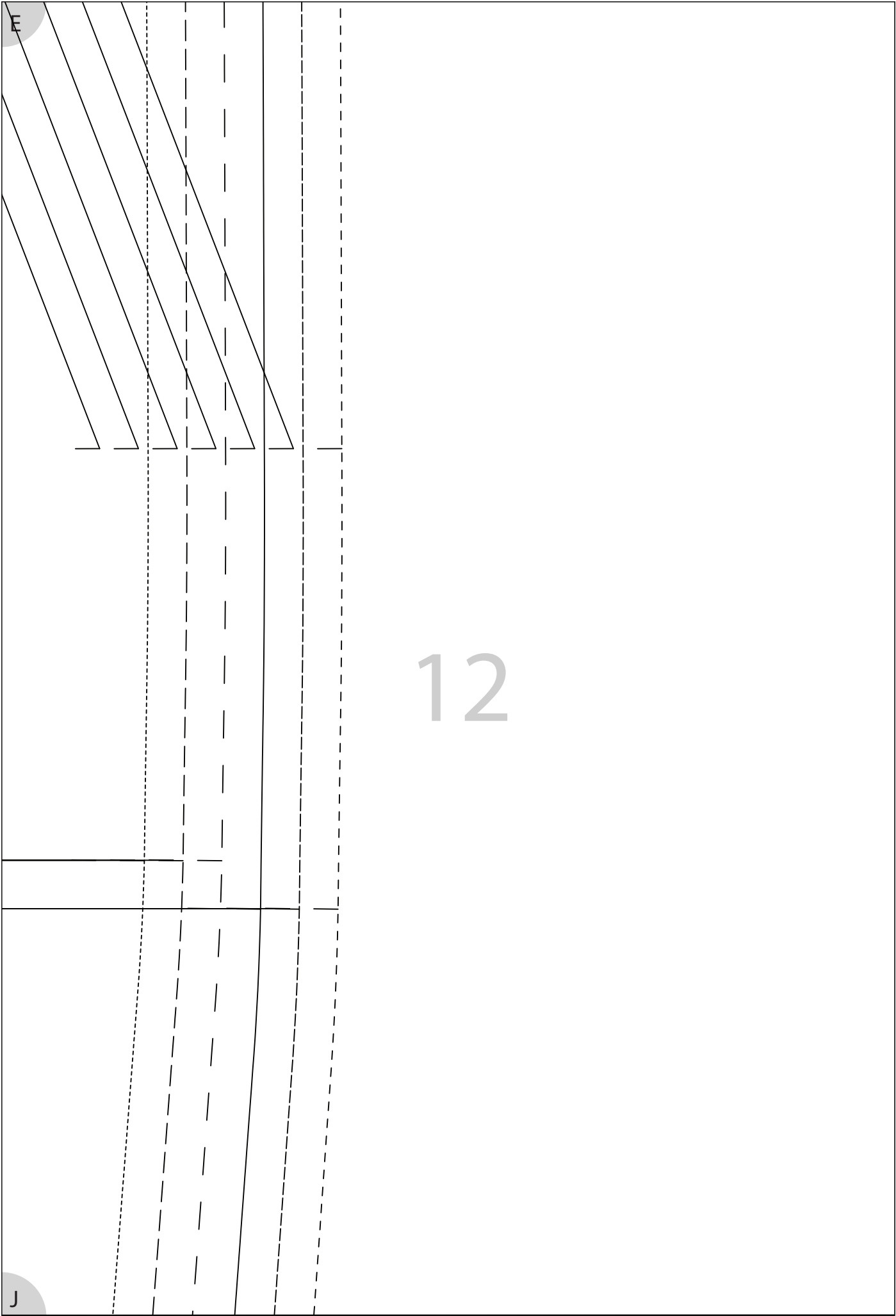


L
XL
XXL

S
XS
M

I

J



XXL

XL

L

M

S

XS

13

F

G

BACK TROUSER
CUT 1 PAIR

14

GRAIN

L

M

G

H

XS

S

M

L

XL

XXL

15

M

N

H

I

XXL

XL

L

M

S

XS

16

N

O

I

J

FRONT TROUSER
CUT 1 PAIR

GRAIN

17

O

P

J

XS

S

M

L

XL

XXL

18

P

19

L

M

20

P

Q

M

N

21

Q

R

N

O

22

R

S

O

P

23

S

T

P

24

T

25

P

Q



26

XS

S

M

L

XL

XXL

U

V

Q

R

27

V

W

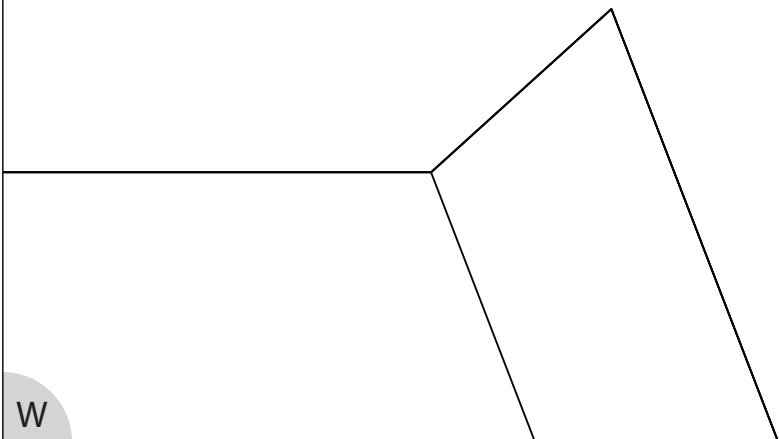
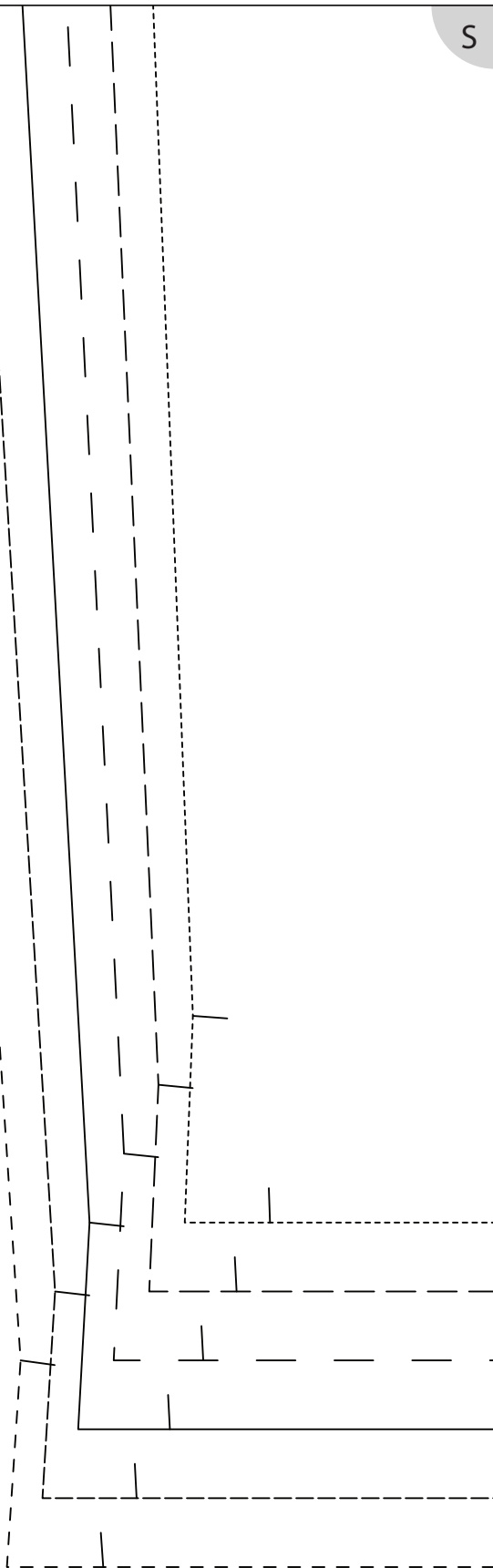
R

S

28

W

X



S

T

ALL DESIGNS AND PATTERNS ARE THE PROPERTY
OF NICKY COOK PATTERNS AND SHARON M
OSBORNE AND PROTECTED BY COPYRIGHT©

THIS PATTERN IS FOR YOUR PERSONAL USE ONLY
AND NOT TO BE REPRODUCED OR FOR
COMMERICAL PURPOSES

WWW.NICKYCOOKPATTERNS.COM

WWW.SHARONMOSBORNE.COM

29

XS

S

M

L

XL

XXL

X

Y

T

30

Y

BACK POCKET
CUT 1 PAIR

THIS SIZE IS FOR
XXL
XL
L

31
GRAIN

U

V

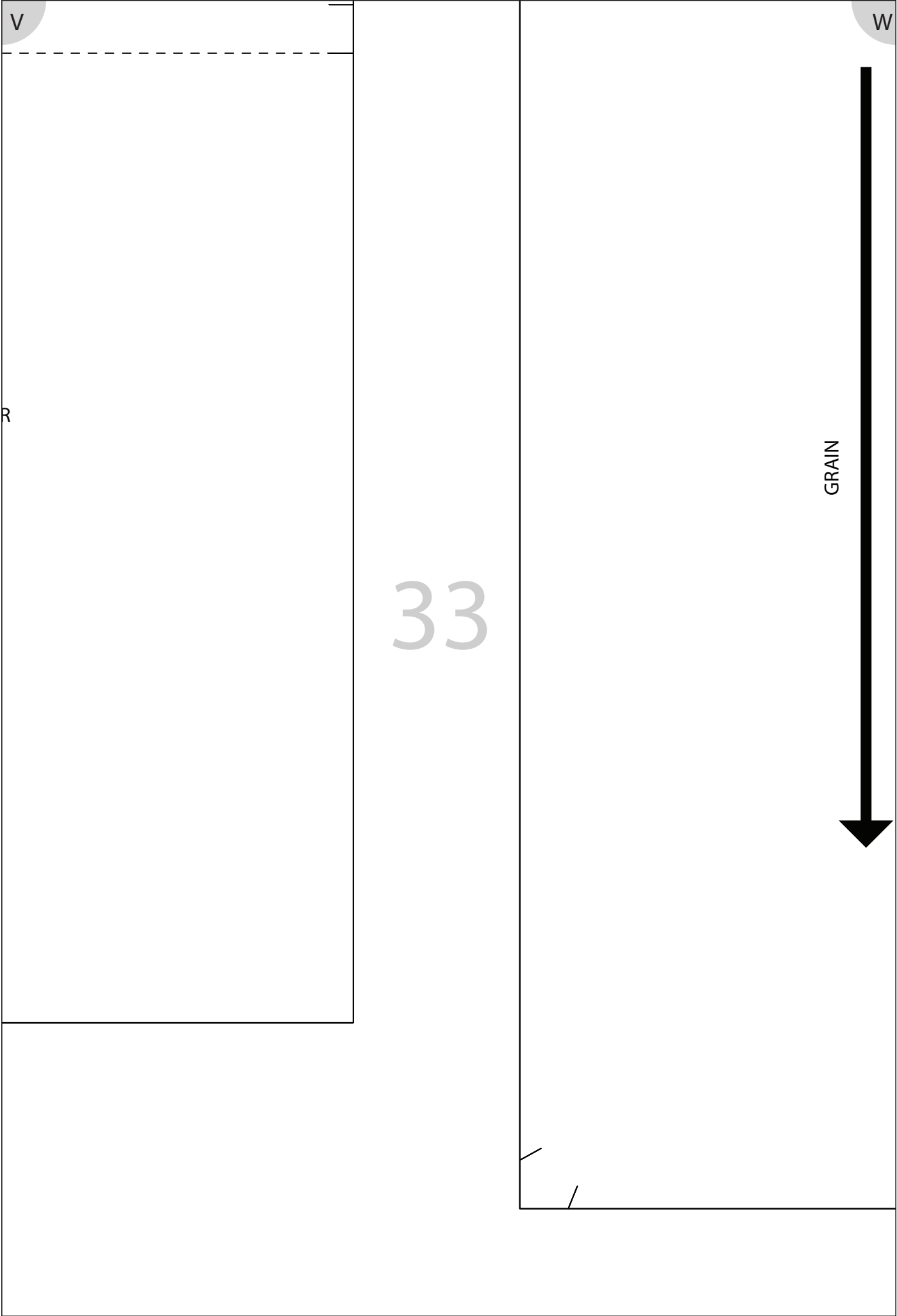
BACK POCKET
CUT 1 PAIR

THIS SIZE IS FO
XS
S
M

32

GRAIN





W

X

FOLD LINE

FRONT POCKET
CUT 1 PAIR

THIS SIZE IS FOR
XXL
XL
L

34

X

Y-

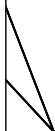
35

GRAIN



FRONT
CUT 1

THIS S
XS
S
M



Y

FOLD LINE

POCKET
PAIR
ZE IS FOR

36

—

|